

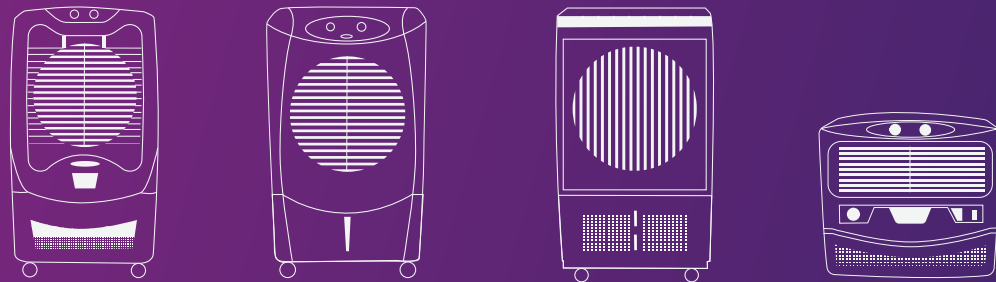
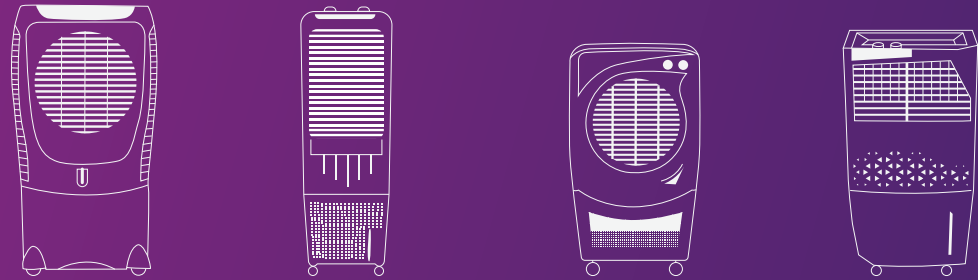
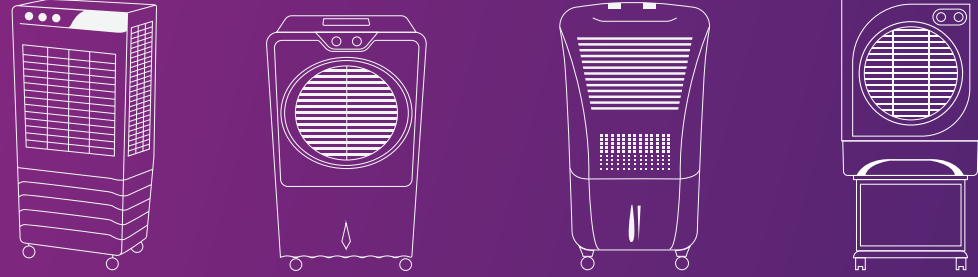
 **BAJAJ** AIR COOLERS | 2021-22

NEW OPEN LIFE



BAJAJ
open new life

**OPEN UP TO
HAPPINESS
WITH PLEASANT
COOLING**



INTRODUCTION

At Bajaj Electricals, we've been on a perpetual journey towards building the future and opening your world to new possibilities and new ways of living. Through innovation, technology and nuanced understanding of the consumers, our new-age appliances and products are playing a meaningful role in the everyday lives of Indian families.

Our range of Air Coolers – Desert Coolers, Personal Coolers, Tower Coolers and Window Coolers – have been specifically designed to deliver a convenient user experience.

The new additions to our range of coolers are designed to enhance the cooling experience. The Anti-bacterial Hexacool Master* ensures the delivery of fresh air by preventing the growth and collection of bacteria on the honeycomb pads at the back of the cooler. The high performance, powerful air delivery and air throw features provide for ambient cooling of a room. While the IoT and the remote-control features make it easy to control the cooler even from a distance, the digital panel displays the cooler settings for maximum comfort. The extensive range of coolers across our desert, personal, tower and window segments offer a variety that suits every consumer's unique needs. All these features and technologies make Bajaj Air Coolers the perfect choice for pleasant cooling.

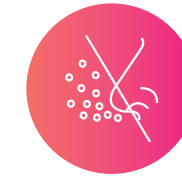
Bajaj Air Coolers come with Anti-bacterial Hexacool Master* with Silver Technology. Fomite Infections (bacteria) can spread through infected indoor surfaces in homes and offices. Silver Technology based anti-bacterial coated home appliance kills over 99% infection-causing bacteria when they come in contact with its surfaces.

Anti-bacterial Hexacool Master* is applicable on select variants only.

INTRODUCING ANTI-BACTERIAL HEXACOOOL MASTER*



**HEXACOOOL
TECHNOLOGY**

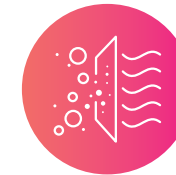


**MALODOUR
RESISTANCE**

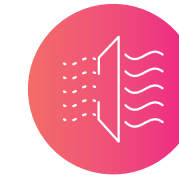


**PURE SILVER
TECHNOLOGY**

Bajaj Air Coolers now come with our thoughtfully designed Anti-bacterial Hexacool Master* that treats you to cool and healthy air. This season, surround yourself with fresh cool air and keep bacteria at bay.



FRESHER AIR



HYGIENIC AIR

Bajaj Air Coolers come with Anti-bacterial Hexacool Master* with Silver Technology. Fomite Infections (bacteria) can spread through infected indoor surfaces in homes and offices. Silver Technology based anti-bacterial coated home appliance kills over 99% infection-causing bacteria when they come in contact with its surfaces.

Anti-bacterial Hexacool Master* is applicable on select variants only.

FEATURES



POWERFUL AIR THROW

Powerful air throw for best reach of cool air at long distance



MAXCOOL TECHNOLOGY

Wood wool cooling media for effective cooling



3-SIDE COOLER MASTER

3-sided honeycomb pad for maximum cooling



4-WAY MOBILITY

Castor wheels with 4-way movement for convenient and easy mobility



4-WAY SWING DEFLECTION

Specially designed 4-way deflection louvers with vertical auto-swing to provide wide air spread



ICE CHAMBER

Ice compartments to store ice cubes for improved cooling experience



SUPER AIR DELIVERY

High air delivery for faster cooling



LARGE WATER TANK

Large water tank capacity for longer cooling with continuous water supply system



DIGITAL DISPLAY AND CONTROL PANEL

Digital display panel to show the exact settings of the cooler for ultimate comfort



3/4/5 LEVEL SPEED CONTROL

3/4/5 speed fan/blower control to adjust air flow according to the requirement



TURBO FAN TECHNOLOGY

Fan-based cooling for efficient circulation of air



TYPHOON BLOWER TECHNOLOGY

Blower-based technology for quick and efficient cooling



HEXACOOOL TECHNOLOGY

Specially designed cooling media with hexagonal design, delivering maximum cooling with minimum water consumption



ANTI-BACTERIAL HEXACOOOL MASTER*

Anti-bacterial technology that kills & prevents growth of bacteria on the honeycomb pads

Bajaj Air Coolers come with Anti-bacterial Hexacool Master* with Silver Technology. Fomite Infections (bacteria) can spread through infected indoor surfaces in homes and offices. Silver Technology based anti-bacterial coated home appliance kills over 99% infection-causing bacteria when they come in contact with its surfaces.

Anti-bacterial Hexacool Master* is applicable on select variants only.

DESERT COOLERS





**FREE
TROLLEY**

NEW MDF60



**60-LITRE
WATER TANK**



**MAXCOOL
TECHNOLOGY**



**ICE
CHAMBER**



**3-SIDE COOLER
MASTER**



**TURBO FAN
TECHNOLOGY**



**70-FOOT
POWERFUL
AIR THROW**



**SUPER AIR
DELIVERY**



**3-SPEED
CONTROL**

Powerful air flow: 5,500 cubic metre/hr (peak),
3,500 cubic metre/hr (average)

Turbo Fan Technology

Water tank capacity: 60 litres

Powerful air throw: 70 feet

Dimensions (L X B X H; in mm): 675 X 690 X 1000



**FREE
TROLLEY**

NEW **MDB60**



**60-LITRE
WATER TANK**



**MAXCOOL
TECHNOLOGY**



**ICE
CHAMBER**



**3-SIDE COOLER
MASTER**



**TYPHOON
BLOWER
TECHNOLOGY**



**70-FOOT
POWERFUL
AIR THROW**



**SUPER AIR
DELIVERY**



**3-SPEED
CONTROL**

Powerful air flow: 6,000 cubic metre/hr (peak),
3,500 cubic metre/hr (average)

Typhoon Blower Technology

Water tank capacity: 60 litres

Powerful air throw: 70 feet

Dimensions (L X B X H; in mm): 675 X 690 X 1000



NEW

DMH70



**70-LITRE
WATER TANK**



**HEXACOOOL
TECHNOLOGY**



**ICE
CHAMBER**



**3-SIDE COOLER
MASTER**



**TURBO FAN
TECHNOLOGY**



**70-FOOT
POWERFUL
AIR THROW**



**SUPER AIR
DELIVERY**



**3-SPEED
CONTROL**

Powerful air flow: 6,300 cubic metre/hr (peak),
4,000 cubic metre/hr (average)

Turbo Fan Technology

Water tank capacity: 70 litres

Powerful air throw: 70 feet

Dimensions (L X B X H; in mm): 690 X 530 X 1100

DMH67



**ANTI-BACTERIAL
HEXACOOOL
MASTER**



**67-LITRE
WATER TANK**



**HEXACOOOL
TECHNOLOGY**



**ICE
CHAMBER**



**3-SIDE COOLER
MASTER**



**TURBO FAN
TECHNOLOGY**



**90-FOOT
POWERFUL
AIR THROW**



**SUPER AIR
DELIVERY**



**3-SPEED
CONTROL**

Powerful air flow: 5,800 cubic metre/hr (peak),
3,500 cubic metre/hr (average)

Honeycomb cooling media

Water tank capacity: 67 litres

Powerful air throw: 90 feet

Dimensions (L X B X H; in mm): 640 X 550 X 1,110




**ANTI-BACTERIAL
HEXACOOOL
MASTER**

DMH80 WAVE



**80-LITRE
WATER TANK**



**HEXACOOOL
TECHNOLOGY**



**ICE
CHAMBER**



**3-SIDE COOLER
MASTER**



**TURBO FAN
TECHNOLOGY**



**60-FOOT
POWERFUL
AIR THROW**



**SUPER AIR
DELIVERY**



**3-SPEED
CONTROL**

Powerful air flow: 4,500 cubic metre/hr (peak),
3,200 cubic metre/hr (average)

Honeycomb cooling media

Water tank capacity: 80 litres

Powerful air throw: 60 feet

Dimensions (L X B X H; in mm): 628 X 495 X 995

DMH60 WAVE



60-LITRE
WATER TANK



HEXACOOOL
TECHNOLOGY



ICE
CHAMBER



3-SIDE COOLER
MASTER



TURBO FAN
TECHNOLOGY



60-FOOT
POWERFUL
AIR THROW



SUPER AIR
DELIVERY



3-SPEED
CONTROL

Powerful air flow: 4,500 cubic metre/hr (peak),
3,200 cubic metre/hr (average)

Honeycomb cooling media

Water tank capacity: 60 litres

Powerful air throw: 60 feet

Dimensions (L X B X H; in mm): 628 X 495 X 905



ANTI-BACTERIAL
HEXACOOOL
MASTER



DMH90 NEO



**90-LITRE
WATER TANK**



**HEXACOOOL
TECHNOLOGY**



**ICE
CHAMBER**



**3-SIDE COOLER
MASTER**



**TURBO FAN
TECHNOLOGY**



**90-FOOT
POWERFUL
AIR THROW**



**SUPER AIR
DELIVERY**



**3-SPEED
CONTROL**

Powerful air flow: 5,600 cubic metre/hr (peak),
4,100 cubic metre/hr (average)

Honeycomb cooling media

Water tank capacity: 90 litres

Powerful air throw: 90 feet

Dimensions (L X B X H; in mm): 655 X 470 X 1,200

DMH65 NEO



65-LITRE
WATER TANK



HEXACOOOL
TECHNOLOGY



ICE
CHAMBER



3-SIDE COOLER
MASTER



TURBO FAN
TECHNOLOGY



90-FOOT
POWERFUL
AIR THROW



SUPER AIR
DELIVERY



3-SPEED
CONTROL



Powerful air flow: 5,600 cubic metre/hr (peak),
4,100 cubic metre/hr (average)

Honeycomb cooling media

Water tank capacity: 65 litres

Powerful air throw: 90 feet

Dimensions (L X B X H; in mm): 655 X 470 X 1090

DMH95



ANTI-BACTERIAL
HEXACOOOL
MASTER



95-LITRE
WATER TANK



HEXACOOOL
TECHNOLOGY



ICE
CHAMBER



3-SIDE COOLER
MASTER



TURBO FAN
TECHNOLOGY



100-FOOT
POWERFUL
AIR THROW



SUPER AIR
DELIVERY



3-SPEED
CONTROL

Powerful air flow: 5,400 cubic metre/hr (peak),
3,700 cubic metre/hr (average)

Honeycomb cooling media

Water tank capacity: 95 litres

Powerful air throw: 100 feet

Dimensions (L X B X H; in mm): 635 X 530 X 1,120

DMH60



ANTI-BACTERIAL
HEXACOOOL
MASTER



60-LITRE
WATER TANK



HEXACOOOL
TECHNOLOGY



ICE
CHAMBER



3-SIDE COOLER
MASTER



TURBO FAN
TECHNOLOGY



100-FOOT
POWERFUL
AIR THROW



SUPER AIR
DELIVERY



3-SPEED
CONTROL

Powerful air flow: 5,400 cubic metre/hr (peak),
3,400 cubic metre/hr (average)

Honeycomb cooling media

Water tank capacity: 60 litres

Powerful air throw: 100 feet

Dimensions (L X B X H; in mm): 635 X 530 X 950

DC 102 DLX DIGITAL



ANTI-BACTERIAL
HEXACOOOL
MASTER



70-LITRE
WATER TANK



HEXACOOOL
TECHNOLOGY



TURBO FAN
TECHNOLOGY



DIGITAL
DISPLAY AND
CONTROL
PANEL



ICE
CHAMBER



REMOTE
CONTROL



SUPER AIR
DELIVERY



3-SPEED
CONTROL



3-SIDE COOLER
MASTER



70-FOOT
POWERFUL
AIR THROW

Powerful air flow: 5,700 cubic metre/hr (peak),
3,400 cubic metre/hr (average)

Remote controlled operation

Water tank capacity: 70 litres

Powerful air throw: 70 feet

Dimensions (L X B X H; in mm): 690 X 530 X 1,100



DC 55 DLX



**54-LITRE
WATER TANK**



**HEXACOOOL
TECHNOLOGY**



**ICE
CHAMBER**



**3-SIDE COOLER
MASTER**



**TURBO FAN
TECHNOLOGY**



**70-FOOT
POWERFUL
AIR THROW**



**SUPER AIR
DELIVERY**



**3-SPEED
CONTROL**

Powerful air flow: 4,900 cubic metre/hr (peak),
3,200 cubic metre/hr (average)

Honeycomb cooling media

Water tank capacity: 54 litres

Powerful air throw: 70 feet

Dimensions (L X B X H; in mm): 630 X 400 X 1,100



DC 2050 DLX



70-LITRE
WATER TANK



HEXACOOOL
TECHNOLOGY



ICE
CHAMBER



3-SIDE COOLER
MASTER



TURBO FAN
TECHNOLOGY



80-FOOT
POWERFUL
AIR THROW



SUPER AIR
DELIVERY



3-SPEED
CONTROL

Powerful air flow: 5,600 cubic metre/hr (peak),
3,400 cubic metre/hr (average)

Honeycomb cooling media

Water tank capacity: 70 litres

Powerful air throw: 80 feet

Dimensions (L X B X H; in mm): 640 X 500 X 1,085

DC 2016



67-LITRE
WATER TANK



MAXCOOL
TECHNOLOGY



ICE
CHAMBER



3-SIDE COOLER
MASTER



TURBO FAN
TECHNOLOGY



90-FOOT
POWERFUL
AIR THROW



SUPER AIR
DELIVERY



3-SPEED
CONTROL

Powerful air flow: 5,800 cubic metre/hr (peak),
3,500 cubic metre/hr (average)

Water tank capacity: 67 litres

Powerful air throw: 90 feet

Dimensions (L X B X H; in mm): 640 X 550 X 1,110



DC 2015 ICON



43-LITRE
WATER TANK



MAXCOOL
TECHNOLOGY



ICE
CHAMBER



3-SIDE COOLER
MASTER



TURBO FAN
TECHNOLOGY



50-FOOT
POWERFUL
AIR THROW



SUPER AIR
DELIVERY



3-SPEED
CONTROL

Powerful air flow: 4,000 cubic metre/hr (peak),
3,000 cubic metre/hr (average)

Water tank capacity: 43 litres

Powerful air throw: 50 feet

Dimensions (L X B X H; in mm): 570 X 400 X 1,090



Images of the products shown are for representation purpose only and the actual colour/size may vary.

PERSONAL & TOWER COOLERS





PX 97 TORQUE



**36-LITRE
WATER TANK**



**HEXACOOOL
TECHNOLOGY**



**TURBO FAN
TECHNOLOGY**



**4-WAY SWING
DEFLECTION**



**4-WAY
MOBILITY**



**30-FOOT
POWERFUL
AIR THROW**



**SUPER AIR
DELIVERY**



**3-SPEED
CONTROL**



**3-SIDE COOLER
MASTER**

Powerful air flow: 2,000 cubic metre/hr (peak),
1,500 cubic metre/hr (average)

Honeycomb cooling media

Powerful three-side surround cooling

Water tank capacity: 36 litres

Powerful air throw: 30 feet

Dimensions (L X B X H; in mm): 455 X 435 X 820



PCF 25 DLX



24-LITRE
WATER TANK



HEXACOOOL
TECHNOLOGY



TURBO FAN
TECHNOLOGY



4-WAY SWING
DEFLECTION



4-WAY
MOBILITY



18-FOOT
POWERFUL
AIR THROW



SUPER AIR
DELIVERY



3-SPEED
CONTROL



3-SIDE COOLER
MASTER

Powerful air flow: 1,700 cubic metre/hr (peak),
1,100 cubic metre/hr (average)

Honeycomb cooling media

Easy-to-read water level indicator

Water tank capacity: 24 litres

Powerful air throw: 18 feet

Dimensions (L X B X H; in mm): 365 X 330 X 705



FRIO



**23-LITRE
WATER TANK**



**HEXACOOOL
TECHNOLOGY**



**ICE
CHAMBER**



**4-WAY SWING
DEFLECTION**



**TYPHOON
BLOWER
TECHNOLOGY**



**30-FOOT
POWERFUL
AIR THROW**



**SUPER AIR
DELIVERY**



**3-SPEED
CONTROL**

Powerful air flow: 2,600 cubic metre/hr (peak),
1,000 cubic metre/hr (average)

Honeycomb cooling media

Easy-to-read water level indicator

Dust protection screen

Water tank capacity: 23 litres

Powerful air throw: 30 feet

Dimensions (L X B X H; in mm): 445 X 340 X 780

TMH36 SKIVE




**ANTI-BACTERIAL
HEXACOOOL
MASTER**



**36-LITRE
WATER TANK**



**HEXACOOOL
TECHNOLOGY**



**ICE
CHAMBER**



**4-WAY SWING
DEFLECTION**



**TYPHOON
BLOWER
TECHNOLOGY**



**25-FOOT
POWERFUL
AIR THROW**



**SUPER AIR
DELIVERY**



**3-SPEED
CONTROL**

Powerful air flow: 3,100 cubic metre/hr (peak),
1,500 cubic metre/hr (average)

Honeycomb cooling media

Easy-to-read water level indicator

Water tank capacity: 36 litres

Powerful air throw: 25 feet

Dimensions (L X B X H; in mm): 460 X 360 X 895



NEW

TMH50



**50-LITRE
WATER TANK**



**HEXACOOOL
TECHNOLOGY**



**ICE
CHAMBER**



**4-WAY SWING
DEFLECTION**



**TYPHOON
BLOWER
TECHNOLOGY**



**30-FOOT
POWERFUL
AIR THROW**



**SUPER AIR
DELIVERY**



**3-SPEED
CONTROL**

Powerful air flow: 1,900 cubic metre/hr (peak),
1,100 cubic metre/hr (average)

Honeycomb cooling media

Water tank capacity: 50 litres

Powerful air throw: 30 feet

Dimensions (L X B X H; in mm): 320 X 340 X 1,290



TMH35



**35-LITRE
WATER TANK**



**HEXACOOOL
TECHNOLOGY**



**ICE
CHAMBER**



**4-WAY SWING
DEFLECTION**



**TYPHOON
BLOWER
TECHNOLOGY**



**30-FOOT
POWERFUL
AIR THROW**



**SUPER AIR
DELIVERY**



**3-SPEED
CONTROL**

Powerful air flow: 1,900 cubic metre/hr (peak),
1,100 cubic metre/hr (average)

Honeycomb cooling media

Water tank capacity: 35 litres

Powerful air throw: 30 feet

Dimensions (L X B X H; in mm): 320 X 340 X 1,115




**ANTI-BACTERIAL
HEXACOOOL
MASTER**

TMH20



**20-LITRE
WATER TANK**



**HEXACOOOL
TECHNOLOGY**



**ICE
CHAMBER**



**4-WAY SWING
DEFLECTION**



**TYPHOON
BLOWER
TECHNOLOGY**



**30-FOOT
POWERFUL
AIR THROW**



**SUPER AIR
DELIVERY**



**3-SPEED
CONTROL**

Powerful air flow: 1,900 cubic metre/hr (peak),
1,100 cubic metre/hr (average)

Honeycomb cooling media

Water tank capacity: 20 litres

Powerful air throw: 30 feet

Dimensions (L X B X H; in mm): 320 X 340 X 960

TMH12



**12-LITRE
WATER TANK**



**HEXACOOOL
TECHNOLOGY**



**ICE
CHAMBER**



**4-WAY SWING
DEFLECTION**



**TYPHOON
BLOWER
TECHNOLOGY**



**30-FOOT
POWERFUL
AIR THROW**



**SUPER AIR
DELIVERY**



**3-SPEED
CONTROL**



**ANTI-BACTERIAL
HEXACOOOL
MASTER**

Powerful air flow: 1,900 cubic metre/hr (peak),
1,100 cubic metre/hr (average)

Honeycomb cooling media

Water tank capacity: 12 litres

Powerful air throw: 30 feet

Dimensions (L X B X H; in mm): 325 X 325 X 845

WINDOW COOLER





MD 2020



**54-LITRE
WATER TANK**



**MAXCOOL
TECHNOLOGY**



**TYPHOON
BLOWER
TECHNOLOGY**



**80-FOOT
POWERFUL
AIR THROW**



**SUPER AIR
DELIVERY**



**3-SPEED
CONTROL**

Powerful air flow: 3,600 cubic metre/hr (peak), 1,800 cubic metre/hr (average)

Humidity control valve

Water tank capacity: 54 litres

Dimensions (L X B X H; in mm): 695 X 555 X 565



701, Rustomjee Aspiree, Bhanu Shankar Yagnik Marg, Off Eastern Express Highway,
Sion (E), Mumbai - 400 022. Tel.: 022 6149 7000

Free Home Service#: 022 4128 0000

consumercare@bajajelectricals.com | shop.bajajelectricals.com |    

 +91 70399 20000

#T&C apply. Please visit: www.bajajelectricals.com/terms-and-conditions/2020